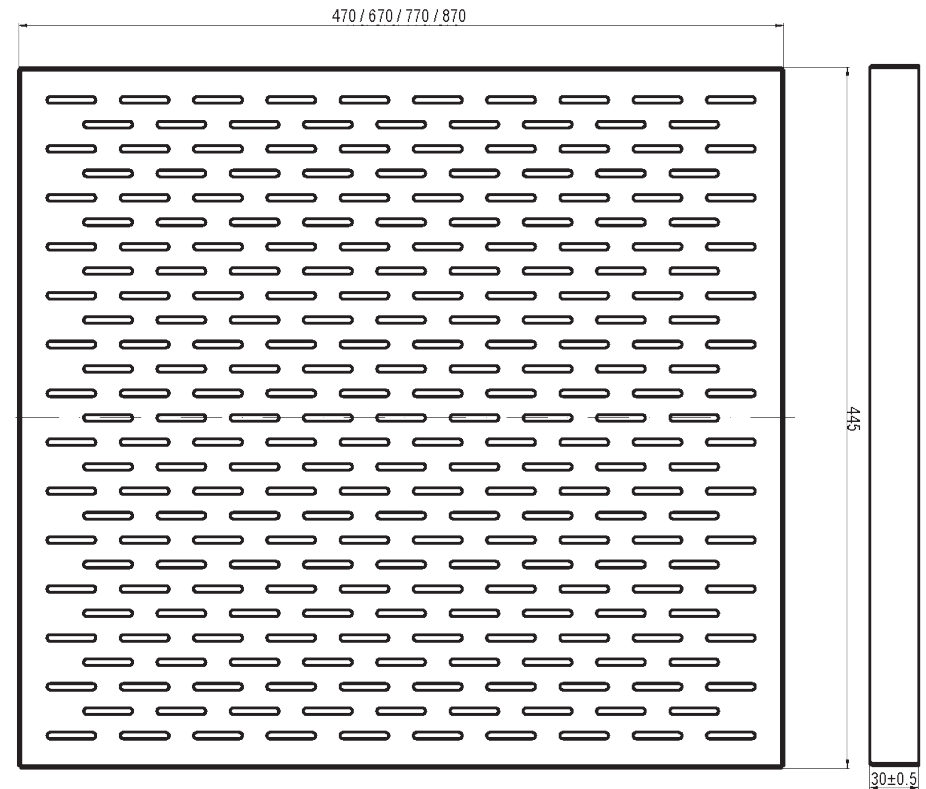
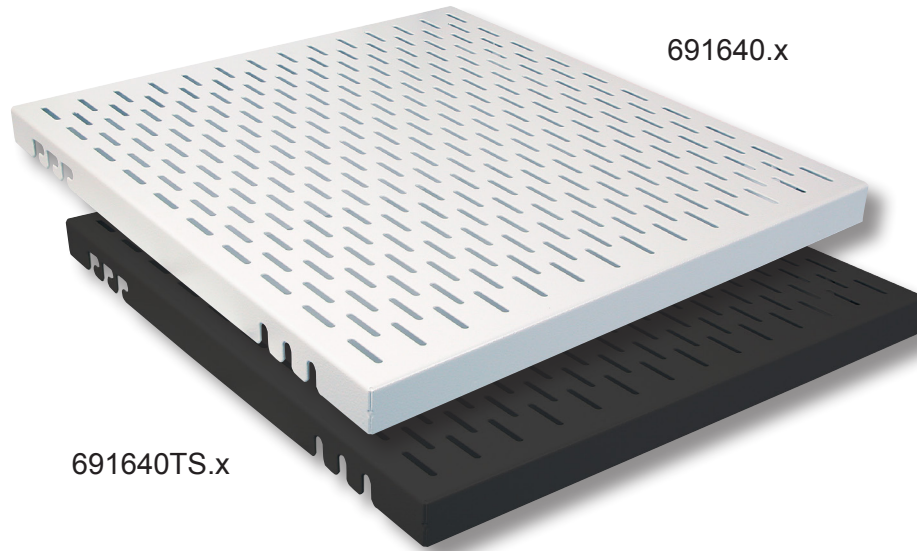
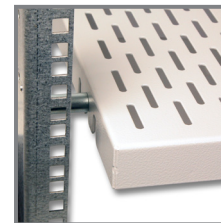
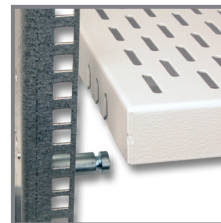
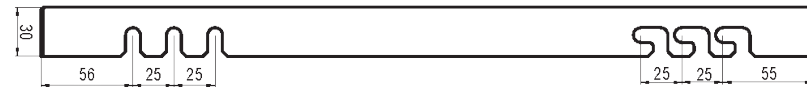


Heavy-Duty Bolt Mount Shelf 19" 1U, max. Load 100 kg



- For mounting in all networking and server cabinets and 19" rack frames
- Width 445 mm
- Fixing of bolts to front and rear profile rails
- Fixing the shelf in the mounted bolt
- 4 studs included
- Shelf material: steel sheet
- Stud material: galvanised steel
- Shelf finish: RAL7035 light grey / RAL9005 deep black

Art.-No.	Depth	Cabinet Depth	Weight
RAL7035, light grey			
691640.1	470 mm	600 mm	3.2 kg
691640.2	670 mm	800 mm	4.2 kg
691640.3	870 mm	1000 mm	5.6 kg
691640.4	770 mm	900 mm	5.0 kg
RAL9005, deep black			
691640TS.1	470 mm	600 mm	3.2 kg
691640TS.2	670 mm	800 mm	4.2 kg
691640TS.3	870 mm	1000 mm	5.6 kg
691640TS.4	770 mm	900 mm	5.0 kg



Fixing of the shelf in the mounted bolts

RoHS compliant

Created MN	Date 02.07.13	Heavy-Duty Bolt-Mount Shelf 19" 1U max. load 100 kg 691640(TS).x	File: 691640(TS)_x_ENG
Last rev. MN	Date 02.07.13		