

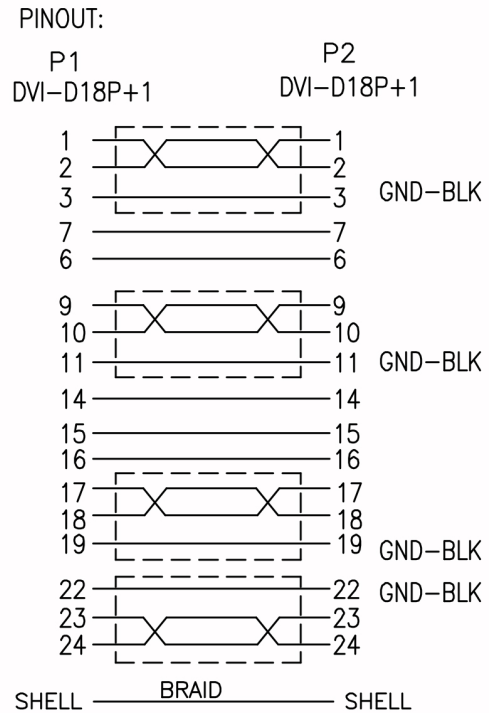
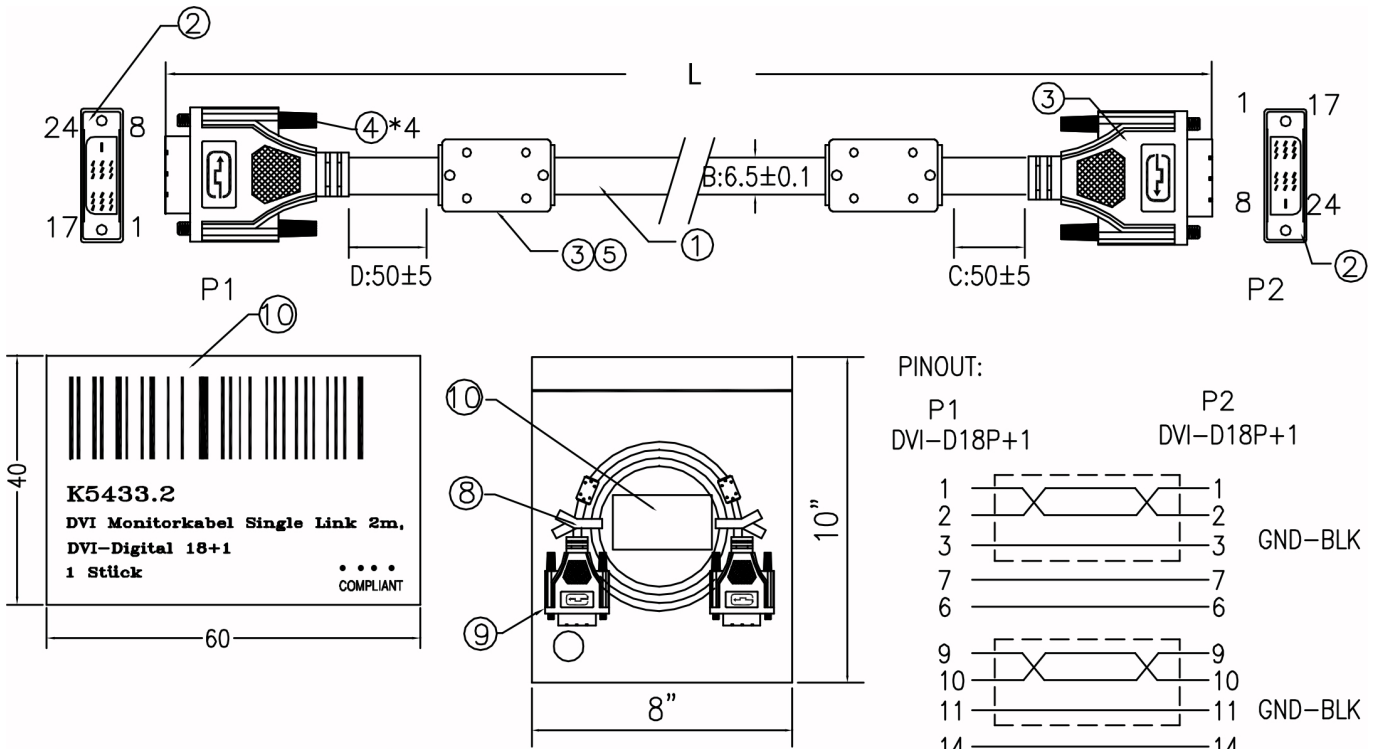
DATASHEET

DVI 18+1 Single Link Connection Cable



Shielding: foil + braiding
Conductor: bare copper, Jacket: PVC
Plugs and contacts gold plated and moulded
Both sides assembled with ferrite core to dejam signals in the cable (better EMV characteristics)
Cable length up to 20m!
Single Link cable
Support resolutions up to 1920 x 1200

Type of connector connection 1: DVI-D 18+1
Number of poles connection 1: 19
Connection type connection 1: plug
Type of connector connection 2: DVI-D 18+1
Number of poles connection 2: 19
Connection type connection 2: plug



Item No.	Length [mm]
K5433.2	2000±20
K5433.3	3000±30

- 1) FERRITE CORE DIE NO: OF00007
- 2) PRIMARY DIM: A. C. D
- 3) RoHS COMPLIANT

3	OUTER JACKET PVC 45PA BLACK(1101) FOR CORD (RoHS)
2	DVI 18P+1 BLACK SOLDER TYPE BRASS TERMINAL GOLD FLASH W/METAL HOOD OD:8.5 (RoHS)
1	CABLE UL20276 (30AWG*1Pair+Aluminum foil+Drain)*4+30#5C+Aluminum foil+Braid(85%)+Drain OD:6.5MM BLACK(1101) 2000MM (RoHS)

Article no.	Title	Colour	Length m
K5433.2	DVI-D Single Link Cable, 2x DVI-D 18+1, M-M, AWG 30, 2,0m, black	black	2.0
K5433.3	DVI-D Single Link Cable, 2x DVI-D 18+1, M-M, AWG 30, 3,0m, black	black	3.0
K5433.5V2	DVI-D Single Link Cable, 2x DVI-D 18+1, M-M, AWG 28, 5,0m, black	black	5.0
K5433.10V2	DVI-D Single Link Cable, 2x DVI-D 18+1, M-M, AWG 24, 10,0m, black	black	10.0
K5433.15V2	DVI-D Single Link Cable, 2x DVI-D 18+1, M-M, AWG 24, 15,0m, black	black	15.0
K5433.20V2	DVI-D Single Link Cable, 2x DVI-D 18+1, M-M, AWG 24, 20,0m, black	black	20.0